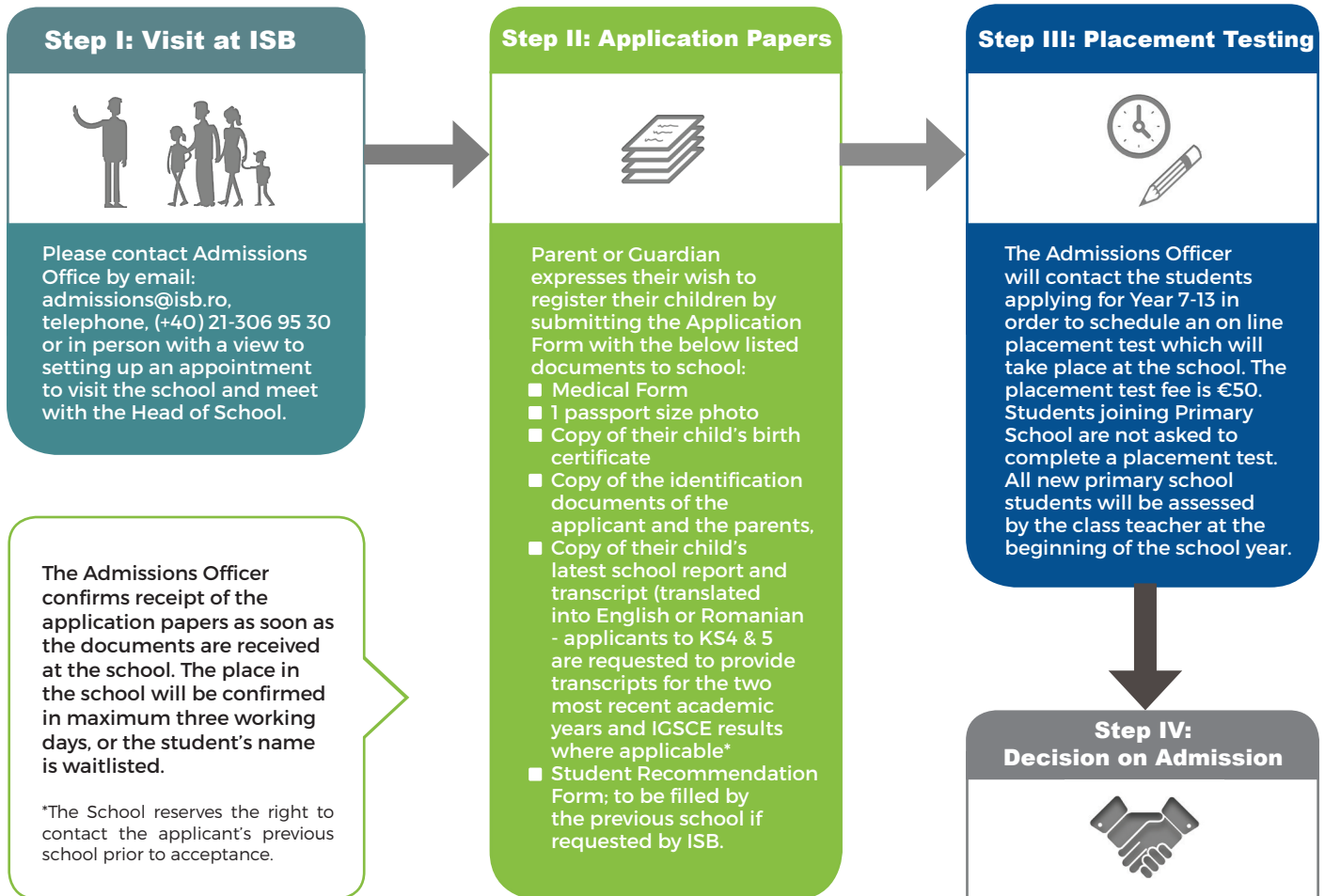



Application for Registration at ISB



Tuition Fees 2018 / 2019

	Full Payment by 28 th Feb. 2018	2 Instalments by 22 nd June 2018	4 Instalments by January 2019
Early Years (8:30 -12:00)	€5,250	€5,618	€6,011
Early Years (8:30 -15:00)	€5,750	€6,153	€6,583
Early Years (8:30 -18:00)	€6,250	€6,688	€7,156
Primary	€9,988	€10,594	€11,125
Key Stage 3	€10,569	€11,125	€11,688
Secondary	€11,188	€11,781	€12,375



Registration Fee

The registration fee is €1,000 and it is nonrefundable.



ESL/SEN Fee

A special education fee of €2,000 per year will be applicable on top of the tuition fee for the students entering Year 3 - 10 who are placed in the ESL programme and for all the students entering the special needs programme.



Lunch Fees

Lunch is an optional service and is provided by an external company. Parents sign a separate contract with the company for this additional service.

*Early Years students benefit from a 30% discount to lunch and transportation fees for the academic year 2018/2019.



Transportation Service

The transportation service is provided by an external company. Parents sign a separate contract with the company for this additional service. For details concerning the school bus service please contact our transport manager at: transport@isb.ro

School Books

A 200€ book fee is charged to primary school students.

The school fee does not cover the book costs for secondary school students. The book list will be confirmed with the parents and the school books will be purchased separately.

Students are given the option to pre-order Apple iPads from school or to bring their own device (BYOD programme) to school, to use electronic textbooks (e-books) .

Discounts

A 5% discount is offered for the full payment of the 4 instalments option.

ISB offers a special discount for siblings as follows:

- 2 siblings registered at the school-5%
- 3 and more siblings registered at the school-10%

The following costs are in addition to tuition fee: uniform, external exams, some extracurricular activities and residential trips.



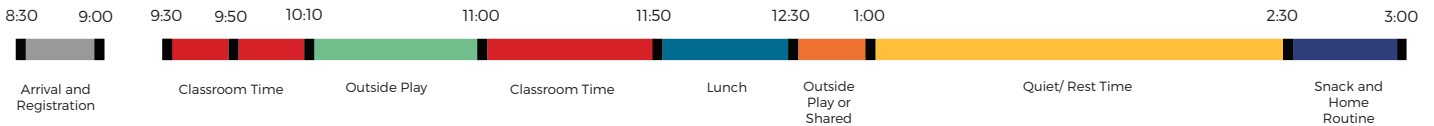
Uniform Prices

Trousers	€35,00
Tshirt (long sleeves)	€17,00
Tshirt (short sleeves)	€15,00
Skirt (only in primary)	€35,00
Vest	€20,00
Pinafore (only in Early Years)	€28,00
PE Tshirt	€9,00
Jumper	€35,00
PE Jacket	€35,00
PE Trousers	€35,00
PE Short	€15,00
Backpack	€12,00
Skort (short skirt)	€35,00

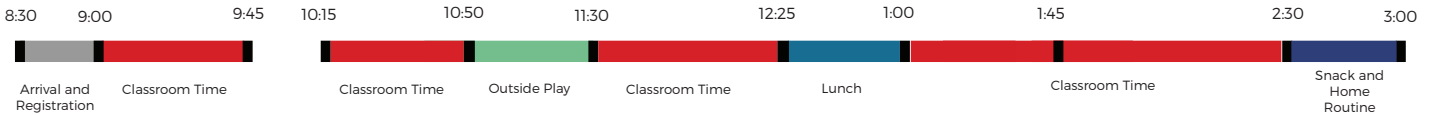
*Optional for secondary:
three quarter trousers for boys / skort for girls

The School Day

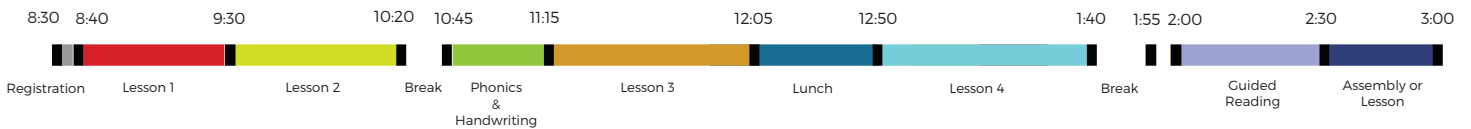
Foundation 1



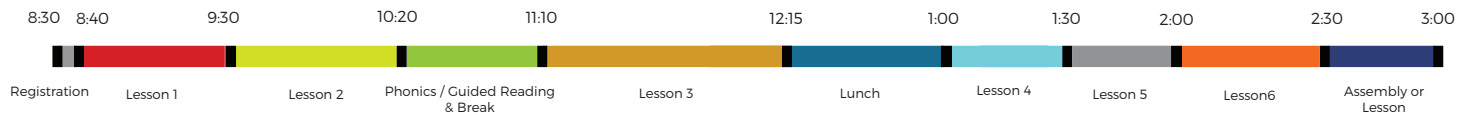
Foundation 2



Key Stage 1



Key Stage 2



A Typical Secondary School Day (Key Stages 3, 4 and 5)



Sample Lunch Menu



Monday	Tuesday	Wednesday	Thursday	Friday
lentil soup roast chicken potatoes croquettes <i>sautéed vegetables</i> salad buffet-5 types fruits	vegetables soup sautéed meat rice <i>broccoli</i> salad buffet-5 types fruits	beef soup fish boiled potatoes <i>sautéed peas</i> salad buffet-5 types fruits	soup with dumplings meat balls spaghetti <i>spinach</i> salad buffet-5 types fruits	mushroom soup chicken shaorma rice <i>boiled beans</i> salad buffet-5 types drinking yogurt fruits

- The daily vegetarian option is shown in italics
- A healthy snack is served to Early Years and Primary School

20 Aug: 1st SMT meeting

23-24 Aug: Induction for new teachers

27-31 Aug: Induction week

AUGUST '18						
S	M	T	W	T	F	S
			1	2	3	4
5	6	7	8	9	10	11
12	13	14	15	16	17	18
19	20	21	22	23	24	25
26	27	28	29	30	31	

FEBRUARY '19

25 Feb – 1 Mar: Half-term Break

S	M	T	W	T	F	S
					1	2
3	4	5	6	7	8	9
10	11	12	13	14	15	16
17	18	19	20	21	22	23
24	25	26	27	28		

3 Sep: First day of Term 1

SEPTEMBER '18						
S	M	T	W	T	F	S
						1
2	3	4	5	6	7	8
9	10	11	12	13	14	15
16	17	18	19	20	21	22
23	24	25	26	27	28	29
30						

MARCH '19

S	M	T	W	T	F	S
					1	2
3	4	5	6	7	8	9
10	11	12	13	14	15	16
17	18	19	20	21	22	23
24	25	26	27	28	29	30
31						

22-26 Oct: Half-term break

OCTOBER '18						
S	M	T	W	T	F	S
	1	2	3	4	5	6
7	8	9	10	11	12	13
14	15	16	17	18	19	20
21	22	23	24	25	26	27
28	29	30	31			

APRIL '19

19 Apr: Noon dismissal (half-day)

S	M	T	W	T	F	S
	1	2	3	4	5	6
7	8	9	10	11	12	13
14	15	16	17	18	19	20
21	22	23	24	25	26	27
28	29	30				

22 Apr – 3 May: Easter and Term Break

29 Apr: Orthodox Easter (official holiday)

30 Nov: St Andrew's Day – No school (official holiday)

NOVEMBER '18						
S	M	T	W	T	F	S
				1	2	3
4	5	6	7	8	9	10
11	12	13	14	15	16	17
18	19	20	21	22	23	24
25	26	27	28	29	30	

MAY '19

1 May: Labour Day (official holiday)

S	M	T	W	Th	F	S
			1	2	3	4
5	6	7	8	9	10	11
12	13	14	15	16	17	18
19	20	21	22	23	24	25
26	27	28	29	30	31	

22 Apr – 3 May: Easter and Term Break

21 Dec: Noon dismissal (half-day)

25 Dec: 1st day of Christmas (official holiday)

26 Dec: 2nd day of Christmas (official holiday)

24 Dec – 4 Jan: Winter Break

DECEMBER '18						
S	M	T	W	T	F	S
						1
2	3	4	5	6	7	8
9	10	11	12	13	14	15
16	17	18	19	20	21	22
23	24	25	26	27	28	29
30	31					

JUNE '19

5 June – Eid-ul-Adha – No school

17 June: 2nd day after Rusalii – No school (official holiday)

21 June – Last day of school – Noon Dismissal (half-day)

S	M	T	W	T	F	S
						1
2	3	4	5	6	7	8
9	10	11	12	13	14	15
16	17	18	19	20	21	22
23	24	25	26	27	28	29
30						

1 Jan: New Year's Day

2 Jan: 2nd Day after New Year

24 Jan: Unification Day

JANUARY '19						
S	M	T	W	T	F	S
		1	2	3	4	5
6	7	8	9	10	11	12
13	14	15	16	17	18	19
20	21	22	23	24	25	26
27	28	29	30	31		

- School event
 - No school
 - Official holiday
 - Weekend
- Term 1: 3 Sep – 21 Dec (15 weeks – 74 days)
- Term 2: 7 Jan – 19 Apr (14 weeks – 68 days)
- Term 3: 6 May – 21 Jun (7 weeks – 33 days)
- Total: 36 weeks – 175 school days**



INTERNATIONAL
SCHOOL OF
BUCHAREST

LEARN

RESPECT

SUCCEED

Șos. Gara Catelu, Nr. 1R, Sector 3, 032991, Bucharest, Romania
(+40) 21-306 95 30 info@isb.ro www.isb.ro